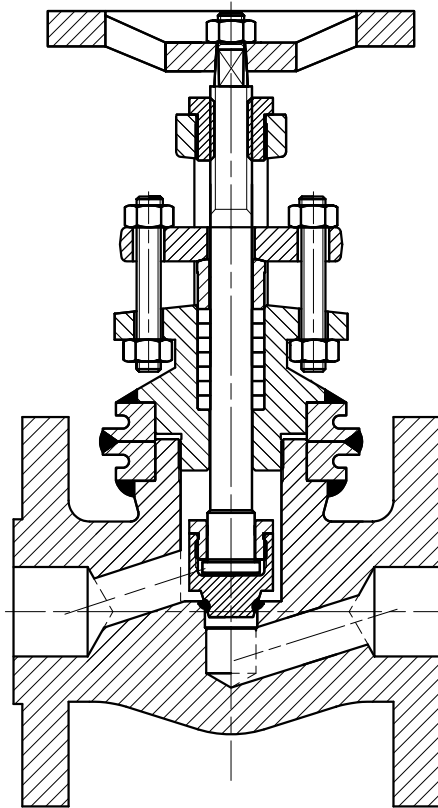


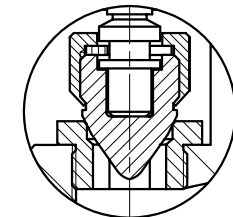
CHAPEAU BOULONNE / BOLTED BONNET
JOINT RTJ / RING JOINT GASKET



JOINT A LEVRES SOUDEES
SEALED LIPS JOINT TYPE

Encombrement A suivant NFE 29-305
Face to face acc. ANSI B16.10
Matériel conforme à NF M87.412 - BS5352
Matériel in acc. with BS 5352 - NF M87.412

Rep.	DESIGNATION
1	CORPS/BODY
2	SIEGE/SEAT
3	CLAPET/DISC
4	TIGE/STEM
5	ECROU DE CLAPET/DISC NUT
6	VERROU DE CLAPET/LOCKNUT WASHER
7	JOINT DE CHAPEAU/BONNET GASKET
8	CHAPEAU/BONNET
9	GARNITURE D'ETANCHEITE/PACKING
10	FOULOIR/GLAND
11	BRIDE DE FOULOIR/GLAND FLANGE
14	TIRANT/GLAND FLANGE STUD
15	ECROU DE TIRANT/GLAND FLANGE NUT
16	DOUILLE/BUSHING
17	VOLANT/HANDWHEEL
18	ECROU DE VOLANT/HANDWHEEL NUT
19	PLAQUE D'IDENTIFICATION/NAME PLATE
20	VIS DE CHAPEAU/BONNET SCREW



Clapet pointeau en option
Needle disc option



CS 3422
112,114 avenue de Vendôme
41034 BLOIS Cedex
FRANCE

ROBINET FORGE A SOUPE A BRIDES
FLANGED FORGED GLOBE VALVE
Sie / Class 150 - 300 - 600 - 900 - 1500 - 2500
PN 10 - 16 - 25 - 40 - 65 - 100 - 160

CHAPEAU BOULONNE - CHAPEAU SOUDE / SIEGE VISSE - SIEGE INTEGRAL
BOLTED BONNET - WELDED BONNET / RENEWABLE SEAT - INTEGRAL SEAT